



# EdUpdate

Washington University School of Medicine  
Office of Education

Issue 47, March 2022

## *Eva's Excerpt w/ Steve Lawrence*



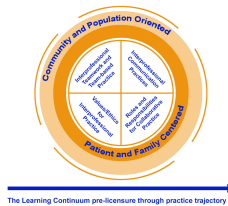
First, let me send my thoughts and prayers to all of you who have family, friends and loved ones in the Ukraine. There is nothing I can say or do to reduce the fear and sadness many of you are feeling. I simply hope you know that I care and am thinking of you.

In addition to the devastation of war, we are navigating a particularly tumultuous phase of the COVID-19 pandemic. First, let us all recognize that there is good news to celebrate on the COVID front.

Full excerpt [here](#).

## *Important Updates*

### **Gateway's Approach to Interprofessional Education (IPE)**



Future physicians must learn to work effectively on healthcare teams which are complex and require the cooperation of many different health professionals. In the Gateway curriculum, our approach to interprofessional education (IPE) began with a review of the 4 Competency Domains created by the Interprofessional Education Collaborative (IPEC), a collaboration of 21 national health professional associations: Interprofessional Communication, Roles and Responsibilities, Values and Ethics and Interprofessional Teamwork. These

competencies are meant to be achieved over a lifetime from training to practice. Read the full article [here](#).

---

## LCME Update: Official visit less than a year away!

We are moving right along in our preparations for the February, 2023 LCME visit!



Our self-study teams are busy carefully reviewing our data collection instrument (DCI). Their findings will be delivered to the Executive Self-Study Committee in May. This committee will analyze the findings of the self-study committees and create a report that will be submitted to the LCME along with the DCI in November. Thanks to everyone who is helping with that process.

In July, we will be hosting visitors for our LCME mock site visit. This visit will serve as a learning opportunity in preparation for the official visit in February 2023. More information will be available soon and will be included on the [website](#).

---

## SAFE Learning Modules in Progress



As part of the Supporting a Fair Environment (SAFE) initiative, mandatory SAFE Learning Modules have been sent to all clinical residents, fellows, faculty and staff that interact with our learners and students. So far, over 2,200 non-student and 500 student learners have completed the modules. Thank you for your engagement! If you have not yet completed these short modules, we ask that you do as soon as possible.

For more information about the SAFE initiative, visit the website at [safereporting.wustl.edu](http://safereporting.wustl.edu). If you cannot find your “Course Invitation” or need help getting started, please email [MedExtendedLearning@wustl.edu](mailto:MedExtendedLearning@wustl.edu).

*Good News*

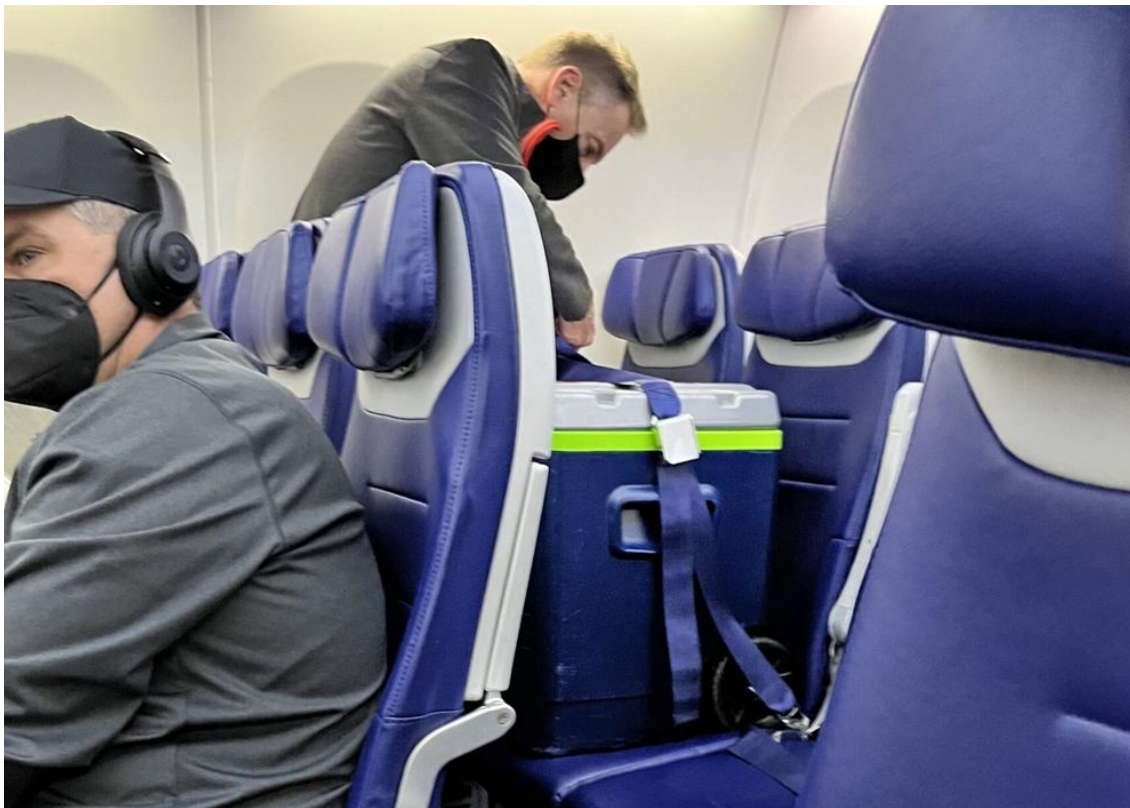
**Dr. Katharine Caldwell goes the extra mile for lung transplant**

A recent early morning Southwest Airlines flight from Chicago to St. Louis had some highly unusual and precious cargo. Boarding the plane at the last minute: a cooler containing a pair of lungs.



A three-member transplant team including **surgery resident and GMEC house staff representative Dr. Katharine Caldwell** had left St. Louis in a small Mid-America Transplant plane just after midnight on Friday, Jan. 28. At the time, it appeared they could easily get the life-saving gift of donated lungs in Chicago and return before a threatening snowstorm hit...

Read the full story [here](#).



## Medical Student Egg Freezing Survey Accepted at ACOG Meeting



Our students' abstract: **Medical Students' Knowledge of and Attitudes towards Oocyte Cryopreservation** has been accepted for an ePoster Presentation at the 2022 ACOG Annual Clinical and Scientific Meeting on May 7. Congratulations on this great opportunity.

Poster Presenter / Primary Author: E'lysse A. Santana, BS  
Second Author: Donna B. Jeffe, PhD  
Third Author: Kenan Omurtag, MD  
Fourth Author: Caitlin E. Martin, MD

## Events

### Remediation Workshop Series

Drs. Dominique Cosco and Nichole Zehnder will be hosting a series of 3 workshops this spring focused on **Remediation**. These workshops will be applicable to educators who work with UME, GME, and health professions students. The workshops will focus on an approach to remediation as a concept, remediation strategies based on competencies, and documentation strategies and examples. The final session will focus on case reviews during which participants may bring their own examples to share, brainstorm, and develop plans with others. Sign up [here!](#)



---

### Save the Date: Education Day 2022

Sponsored by the Academy of Educators, **Education Day** will be held **Tuesday, October 11, 2022**. Education Day is a special event consisting of educational workshops, a celebration of new inductees to the Academy of Educators and Education-focused Award recipients, and a networking session to wrap up the day. Education Day highlights all aspects of our Educational Mission and recognizes those educators making a difference in the lives of learners, mentees, and colleagues across the School of Medicine.



---

### Registration Open for CIPE Spring Workshops

The Center for Interprofessional Practice and Education Spring 2022 series continues this month with:



### **The Community Health Worker (CHW) Impact:**

**Understanding the Bridges that Bond.** Learn about the St. Louis Community Health Worker Coalition. Listen to the stories of credentialed CHWs. Attendees will learn the ideal competencies, credentials, and care team functions of a CHW, as well as where CHWs work, and how CHWs center Social Determinants of Health to support their clients/patients.

To register and see the full list of workshops, click [here](#).

---

## **ICBME Hosting Monthly Webinars**



The International Competency-based Medical Education (ICBME) collaborators are a group of leading international experts who examine conceptual issues and current debates in competency-based medical education (CBME). As part of their engagement in ongoing discussions of CBME issues, they are hosting their 5th series of CBME webinars, running monthly through June 2022.

For a full list of webinars in the series and registration details, click [here](#).

## ***Announcements***

### **Occupational Therapy welcomes Lenin Grajo to faculty**



On July 1, the Program in Occupational Therapy **will welcome** **Lenin Grajo, PhD, EdM, OTR/L**, associate professor of occupational therapy and psychiatry (PEFA), to its faculty. He will serve as the associate director of the Program, associate director of Diversity, Equity and Inclusion, and the director of the Division of Professional Education. Grajo is a national leader, educator, researcher and pediatric occupational therapist. He is a champion of integrating anti-racist and

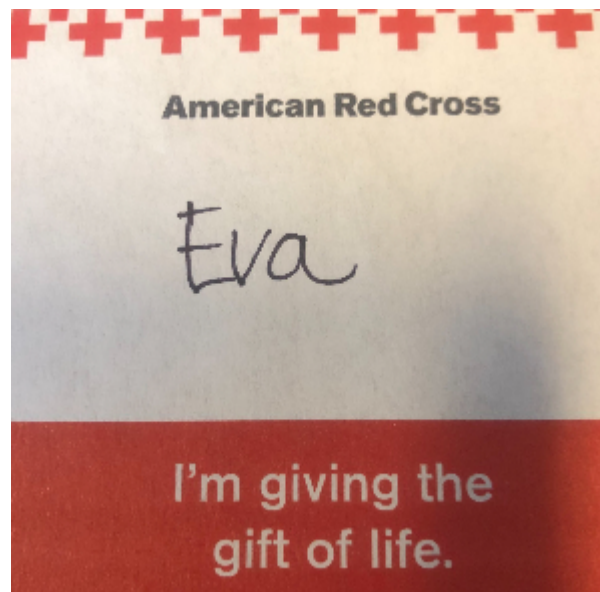
inclusive pedagogy in medical and occupational therapy education, and through his service work with the American Occupational Therapy Association, he led a national mentorship program for occupational therapy educators.

---

## Call for donations for the Red Cross



If you can, please consider donating blood to the Red Cross. We have a donation site in the LINK on the med campus running three days a week. People can register [here](#) for our campus site or wherever most convenient for them. There is a national blood shortage so every donation helps.



---

## Loeb Teaching Fellowship Applications DUE March 11

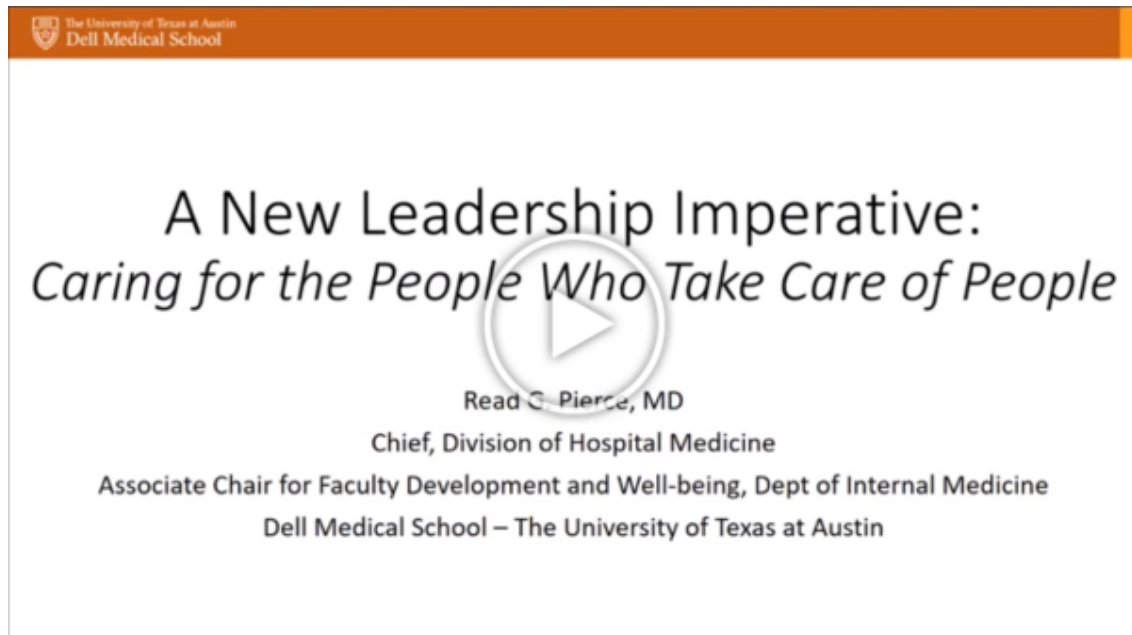


The Carol B. and Jerome T. Loeb Teaching Fellows program provides fellows the opportunity to implement ideas that augment the education of medical students and residents. The program was established to advance education at WUSM by honoring faculty committed to excellence and education, and encouraging teaching excellence to residents and students. To learn more about the process, the selection committee, current and previous Loeb Fellows, and to apply, click [here](#).

---

## A New Leadership Imperative: Caring for the people who take care of people

For those who missed the Feb. 15 event, you can watch visiting professor Dr. Read Pierce's presentation here.



## Teaching Scholars Program (TSP) Applications DUE March 4



The [Academy of Educators](#) Teaching Scholar Program is recruiting its new cohort of participants. TSP is a 12-month certificate program designed to enhance knowledge and skills, and develop future leaders in healthcare education with a focus on core components of educational scholarship and curriculum development. The call for applications is now open. The deadline to submit an application is Friday, March 4, 5pm. For more information about the program, time requirements, and how to apply, click [here](#).

## Scholarship & Accolades

### Ross Elected Fellow of Medical Education Society



Will Ross, MD, the Alumni Endowed Professor of Medicine and associate dean for diversity at Washington University School of Medicine in St. Louis, **has been elected** to the Society of Academic Continuing Medical Education's (SACME) Academy of Fellows.

Ross, also a professor of medicine in the Renal Division and a noted public health epidemiologist, was inducted during SACME's annual meeting.

The society's Academy of Fellows recognizes preeminent medical education and continuing medical education (CME) and continuous professional development (CPD) leaders for their seminal contributions to the field.

---

## Spencer Appointed to ACGME Review Committee



Abby Spencer, MD, MS, FACP has been appointed to the ACGME Review Committee for Internal Medicine. ACGME-accredited residency and fellowship programs are continuously monitored by the applicable specialty-specific Review Committee for substantial compliance with the applicable ACGME Requirements using annual program data. The Review Committees also monitor annual Resident/Fellow and Faculty Survey results, as well as accreditation Site Visit Reports, as applicable.

## *Personal & Professional Development*

### Racial Equity, Civic, and Community Engagement Resources



The Office of Education is dedicated to educating ourselves as individuals and as an education team on issues of structural racism, best practices in education, and effective leadership to ensure we can maximally contribute to change.

Click [here](#) for a running list of resources that we are continuing to gather.

---



## Stay strong in 2022 with mindfulness practices



Positively impact your mindset, your body, and everyone in your life by learning how to develop formal and informal mindfulness practices that can help you reduce stress and anxiety through WashU's [Move into Mindfulness series](#). Sessions are available via Zoom for all employees and facilitated by Meg Krejci, wellness consultant and expert facilitator of the Mind Body Stress Reduction program (MBSR).

Additional wellness resources [here](#).

## Publications

### Allyson Zazulia and team published in *Stroke*

#### Stroke



Allyson Zazulia and team recently had their paper, [Trends in Racial and Ethnic Diversity in Vascular Neurology Fellowships From 2006 to 2018: A Cross-Sectional Analysis](#), published in the journal *Stroke*. They reported on an analysis of race/ethnicity of Neurology trainees from 12 years of data collected in the national Graduate Medical Education census reports administered by the AAMC and AMA. While percentage of trainees underrepresented in medicine (UIM) had not changed among Neurology residents and fellows overall, there was a significant downtrend of UIM among Vascular Neurology fellows, which is especially troublesome given the disparities in stroke incidence and care. Strategies are discussed, which could be relevant for other specialties.



To view recent education publications, visit the Office of Education [website](#).

## Feedback

Newsletter Feedback



Feedback?! Please take a couple of minutes to complete the following [\*\*survey to help us improve the newsletter.\*\*](#)

---

EdUpdate is a monthly newsletter from the Senior Associate Dean for Education featuring information and opportunities for the Office of Education community.

To subscribe and receive the EdUpdate, click [here](#).

*Copyright © 2022 Washington University in St. Louis, All rights reserved.*

All rights reserved.

[EdUpdate Newsletter Archive](#)

Want to change how you receive these emails?

You can [update your preferences](#) or [unsubscribe from this list](#).