



EdUpdate

Washington University School of Medicine
Office of Education

Eva's Excerpt

Issue 79, November 2024



This upcoming election presents a pivotal opportunity for you to make an impact on the policies that shape the field of medicine and the health of our communities. Yet, statistics have consistently shown that physicians are less likely to vote. A study published in *JAMA Internal Medicine* in 2018 revealed that, during federal elections, physicians have a voting rate approximately 20% lower than the general population. A 2021 *Journal of General Internal Medicine* article showed that physicians were 12% less likely, registered nurses 10% less likely, and physician assistants 11% less likely to vote than the general population. [Full Excerpt](#)

Announcements

Post-Election Self-Care for Students



Prioritize your mental health and well-being after voting by attending one of the below Medical Campus events, or find [all events here](#).

Post-Election Mental Health Open House with Dr. Gladys Smith: Wednesday, Nov. 6, 11AM - 1PM, Location: FLTC 208, No RSVP needed

Animal Therapy with WU-PD Dogs: Thursday, Nov. 7, 12PM - 1PM, Location: FLTC 402, No RSVP needed

Community Caminos (Walks to Forest Park): Thursday, Nov. 7 and Thursday, Nov. 14, 2:30PM, Location: FLTC Atrium, No RSVP needed

TruFusion Barefoot Bootcamp Class: Saturday, Nov. 9, 9AM, Location: TruFusion - Foundry (3730 Foundry Way, St Louis, MO 63110), [RSVP Link](#) *Limited to 60 spots!*

Sound Bath Session with Steve Coleman: Monday, Nov. 11, 3PM, Location: Danforth Chapel (by CRB & Shell Café), [RSVP Link](#)

Laughter Yoga with Gayle Rose: Tuesday, Nov. 12, 3PM, Location: FLTC 404, [RSVP Link](#)

Call for Applications

Academy of Educators Programs



Small Grants

Application Deadline: Wednesday, November 6, 2024

[Questions](#) | [Requirements](#) | [Application](#)

Projects must be focused on the scholarship of teaching and learning, rather than biomedical discovery or application. Up to \$5,000 will be awarded. **In collaboration with MERU.**

Leadership in Education Administration Program (LEAP)

Application Deadline: Friday, November 15, 2024, 11:59PM

[View Dates, Learn More & Apply Here](#)

Designed for ambitious individuals seeking to excel in leadership roles across WashU's educational programs, LEAP's introductory leadership curriculum covers essential skills and knowledge including Change Management, Negotiation, and Coaching.

Events

Get Ready to Mock enRoll



Save the date & drop in for 30 minutes!

**ROCK YOUR
TRANSITION TO
Workday
Student!**

Attend Mock enRoll to preview the new system before it goes live.

Find a convenient event to stop in and check it out.



Nov. 11, Noon to 4pm, McDonnell 100
Nov. 13, 11am to 2pm, 4444 Building
Nov. 15, 9am to Noon, McDonnell Erlanger



Students, save the date for upcoming Workday Student Mock enRoll events Nov. 11, 13 & 15! This is a drop-in, open house style event. View details & additional times/locations [here](#).

Academy of Educators Workshops



Mentorship Best Practices Series

Dates/Times: Tuesday, November 5, 2024, 12:30-3:00PM

[Register Here](#) | [More Information](#)

A Safe SPACE: How educators can support the work-related grief of their trainees or colleagues

Date/Time: Thursday, November 14, 2024, 3:00PM-4:30PM

[Register Here](#) | [More Information](#)

Teachfest Royale: An 8-minute Didactic Challenge

Date: Tuesday, February 4, 2025

Choose one faculty member from your department / division / program to compete in a school-wide AOE teaching competition. Learn more [here](#), and email notice of participation to academyofeducators@wustl.edu by Monday, December 9, 2024.

Ready, Set, Mentor! Interprofessional Speed Mentoring Luncheon

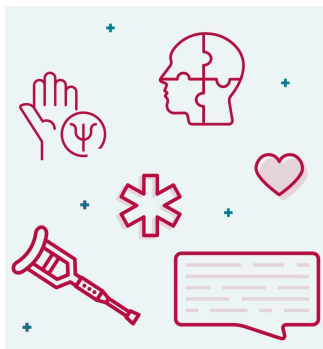
Date/Time: Tuesday, February 25, 2025, 12:00PM

Location: In-Person (Calendar invite sent with location)

[Register HERE](#)

Mentors will speak on professional development, education leadership, educator skill acquisition, and medical education careers.

In Our Own Words: Identity



Date: March 19, 2025, 6:00PM | Submission deadline December 20

Location: Clark-Fox Forum, Hillman Hall, Danforth Campus

[Details and submission link here](#)

WashU medical students, occupational therapy and physical therapy students, residents, fellows, and faculty are invited to the third annual *In Our Words* event, where visual artwork and personal stories are submitted and recited live. The 2025 theme is "Identity."

Good News

Bhayani Honored with 2024 AMWA Inspire Award



Rakhee Bhayani, MD has been recognized with the 2024 AMWA Inspire Award by the American Medical Women's Association. This annual award celebrates women physicians who exemplify the highest values of vision, integrity, service, and role-modeling in medicine and healthcare. Read more [here](#).

DOM IM Residency Recognized with DEI Award



The WashU Department of Medicine Internal Medicine Residency Program has been selected as a recipient of the 2025 ACGME Barbara Ross-Lee, DO Diversity, Equity, and Inclusion Award. The award will be presented at the [2025 ACGME Annual Educational Conference](#) in February 2025.

White Coat Ceremony 2024



Friends and family of 124 new medical students filled Graham Chapel on the Danforth Campus to witness students receiving their white coats from faculty members involved in their training. The incoming class then recited their [class oath](#), which they had crafted as a team. [Full Story](#).

Education Day 2024 Recap



The 2024 Education Day event was a resounding success! Educators across SOM explored advancements in teaching and learning, as well as celebrated [award recipients](#) and [new member inductees](#). Save the date for next year's event on Tuesday, October 14, 2025! [Photo Gallery & Session Recordings](#) | [Virtual Poster Presentation](#) | [EdDay 2024 Survey](#)

Thompson Addresses Online Course Regulations



Emily W. Thompson, PhD presented “Future-Proof Your Online Course: Changing Regulations & Best Practices” at the [Focus on Teaching and Technology Conference](#) (FTTC), hosted by the University of Missouri-St. Louis. The session addressed how to meet federal regulations for online courses in terms of faculty engagement with students (“Regular and Substantive Interaction”) and student engagement with the course (“Academic Attendance”). The presentation also covered [recent press](#) about a proposed attendance policy. Questions? [Contact Emily](#) or [view the handout](#).

Welcome Baby Micah!



Congratulation to Kaci Lally and her family who welcomed the very handsome Micah on September 30, 2024. Mom and baby are doing great. Welcome baby Micah!

Good Reads

Jeffe Published in Medical Education Online Journal



Our GMG faculty member, Donna B. Jeffe, PhD ([Director of the Medical Education Research Unit & Director of the Health Behavior, Communication, and Outreach Core](#)), published a paper titled "[Recommendations to address and research systemic bias in assessment: Perspectives from directors of research in medical education](#)" in the *Medical Education Online Journal*. The paper outlines recommendations for further research on systemic bias in medical education, developed from a workshop discussion at the 2023 annual meeting of the Society of Directors of Research in Medical Education. Directors from diverse backgrounds provided insight into the need for more evidence-based interventions that promote more equitable assessment practices and that can attenuate the effects of bias. Congratulations, Donna!

How to Sustain Empathy During Difficult Times



During her recent book talk, Jessi Gold talked with Dean Aagaard about both empathy and compartmentalization. [This article](#), recommended by Dr. Cole Schulte, sheds some additional light on the topic and is worth a read.

[WashU Medicine Office of Education](#)
WUSMeducation@wustl.edu

660 S. Euclid Avenue
St. Louis, MO 63110

[Manage your preferences](#) | [Unsubscribe](#)

Got this as a forward? [Sign up](#) to receive our future emails.

[Subscribe](#) to our email list.